


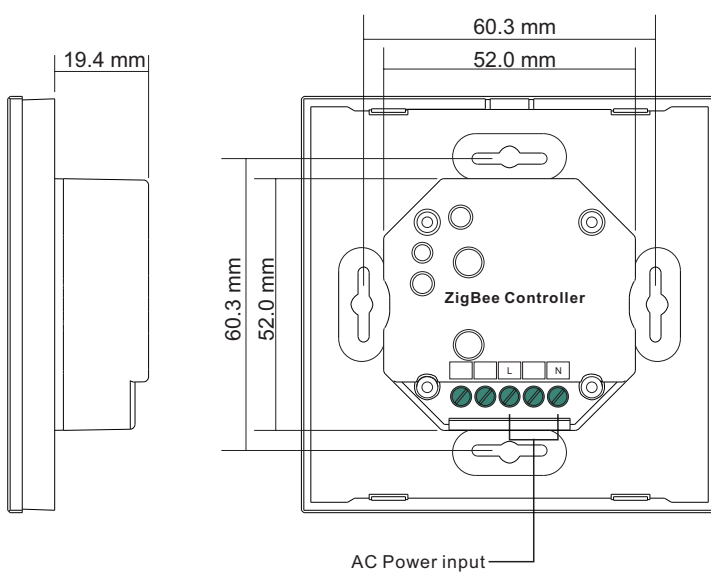


Características técnicas / Technical data

Alimentación/ <i>power supply</i>	100-230VAC
Tipo de control/ <i>dimmmable surpport</i>	ZigBee 3.0
Medidas Mando/ <i>remote control dimensions</i>	86x86x29.1mm
Medidas Receptor/ <i>Receiver dimensions</i>	-----
Frec.de trabajo del mando/ <i>Work frequency command</i>	2.4Ghz
Dist. de señal del mando/ <i>Command signal distenace</i>	30mts

Referencia <i>Reference</i>	Alimentacio <i>Power supply</i>	Zonas <i>Zones</i>	Medidas <i>Measure</i>	Carga Máx. <i>Max.Charge</i>	Tipo de Control <i>Type of control</i>
BS-ZG07	100-230VAC	1	86x86x29.1mm	30 Receptores	

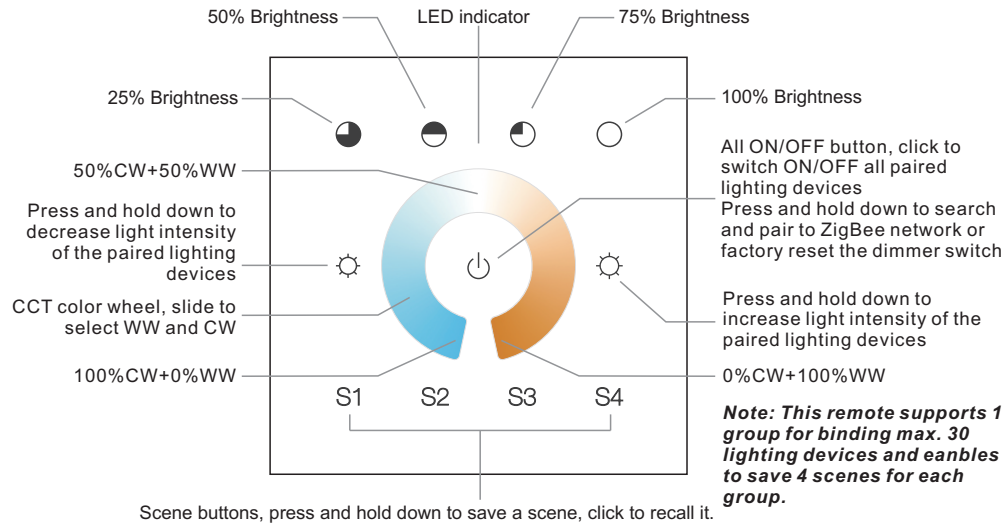
Front side



Back side

**Important:** Read All Instructions Prior to Installation

### Function introduction



### Product Data

Protocol	ZigBee 3.0	• ZigBee CCT remote based on ZigBee 3.0
Input Voltage	100-240VAC	• Full touch glass interface, smooth CCT and light intensity control
Transmission Frequency	2.4GHz	• Enables to pair ZigBee lighting devices via touchlink commissioning without coordinator
Transmission Range (free field)	30m	• Supports find and bind mode to pair with ZigBee lighting devices in the same network
Protection Type	IP20	• Supports 1 group for binding max. 30 lighting devices
Dimming Range	0.1%-100%	• 2.4 GHz global operation
Dimensions	86x86x29.1mm	• Transmission range up to 30m
		• Compatible with universal ZigBee Gateway products
		• Compatible with universal CCT ZigBee lighting devices

### ZigBee Clusters Supported by This Remote Are As Follows:

#### Input clusters:

- Basic
- Power Configuration
- Identify
- Diagnostics

#### Output clusters:

- Identify
- Scenes
- On/off
- Level control
- Color control
- Ota

### Safety & Warnings

- DO NOT install with power applied to the device.
- DO NOT expose the device to moisture.

### Operation

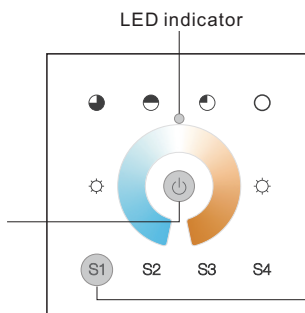
1. This ZigBee CCT remote is a wireless transmitter that communicates with a variety of ZigBee compatible systems. This transmitter sends wireless radio signals that are used to remotely control a compatible system.

2. This ZigBee remote supports 1 group for binding max. 30 lighting devices and enables to control tunable white ZigBee lighting devices.

### 3. Zigbee Network Pairing through Coordinator or Hub (Added to a Zigbee Network)

**Step 1:** Remove the remote from previous zigbee network if it has already been added to it, otherwise pairing will fail. Please refer to the part "Factory Reset Manually".

**Step 3:** Press and hold down until LED indicator turns on.

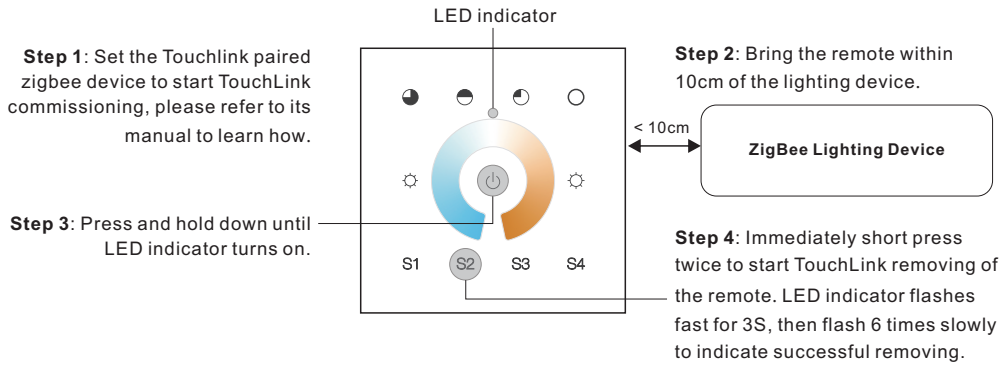


**Step 2:** From your zigbee controller or hub interface, choose to add device or accessory and enter Pairing mode as instructed by the controller.

**Step 4:** Immediately short press to search nearby network, indicator flashes every 1 second, 20 seconds timeout if there is no network. Indicator will then blink 5 times quickly for successful pairing.

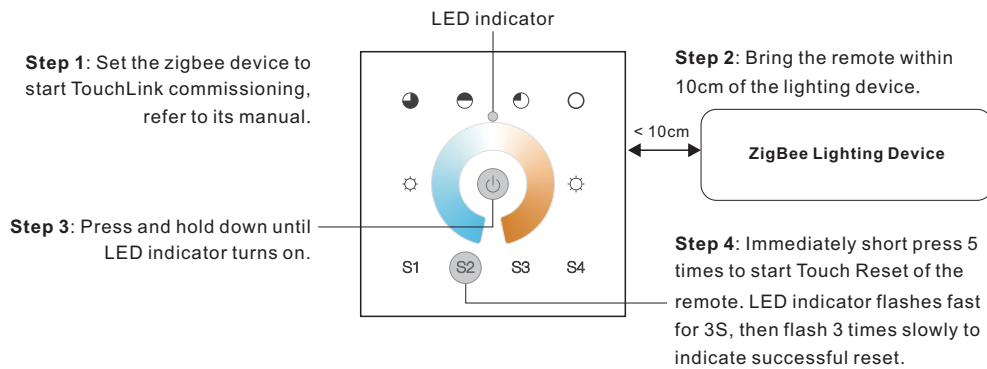


### 7. Remove a Touchlink Paired ZigBee Lighting Device



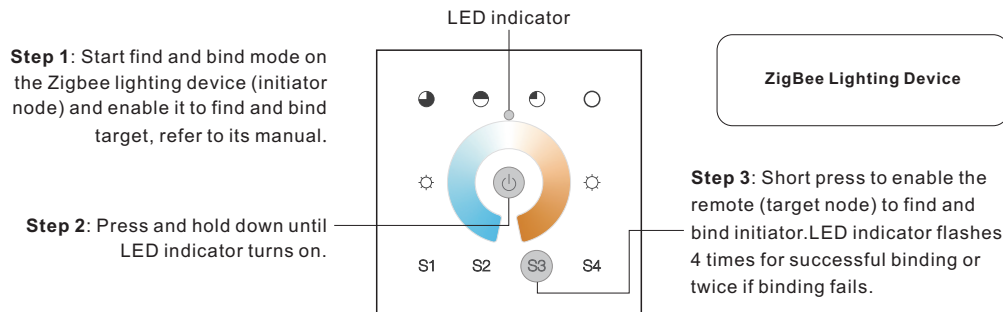
### 8. Factory Reset a Lighting Device (Touch Reset)

**Note:** the device shall be added to a network, the remote added to the same one or not added to any network.



### 9. Find and Bind a Zigbee Lighting Device

**Note:** Make sure the device and remote already added to the same zigbee network.

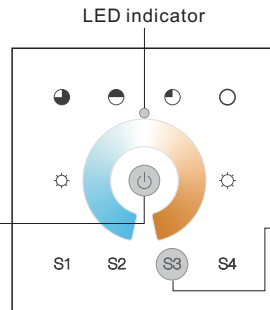


**Note:** Each remote can bind max. 30 lighting devices.

### 10. Find and Unbind a Zigbee Lighting Device

**Step 1:** Start find and bind mode on the Zigbee lighting device (initiator node) and enable it to find and bind target, refer to its manual.

**Step 2:** Press and hold down until LED indicator turns on.

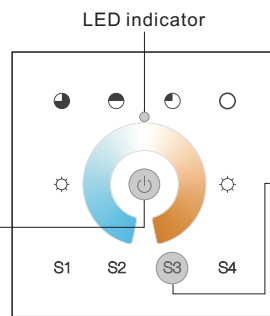


**ZigBee Lighting Device**

**Step 3:** Short press twice to enable the remote (target node) to find and unbind initiator. LED indicator flashes 4 times for successful unbinding or twice if unbinding fails.

### 11. Clear All Find and Bind Mode Paired Lighting Devices

**Step 1:** Press and hold down until LED indicator turns on.

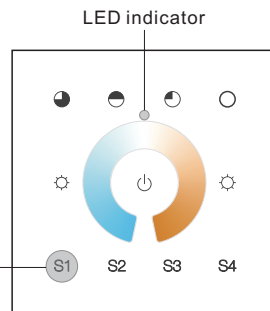


**Step 2:** Short press 5 times continuously to clear all bound lighting devices. LED indicator flashes 4 times for successful unbinding.

### 12. Setup a Network & Add Devices to the Network (No Coordinator or Hub Required)

**Step 1:** Factory reset the remote and the lighting device, refer to their manuals.

**Step 3:** Short press button to enable the network to discover and add devices, LED indicator will flash twice. 180 seconds timeout, repeat the operation.



**Step 2:** TouchLink the remote and device to setup a network, refer to their manuals.

< 10cm

**ZigBee Lighting Device**

**Step 4:** Set another remote into network pairing mode and pair it to the network, refer to its manual.

**Step 5:** Add more remotes to the network as you would like.

**Step 6:** Factory reset the lighting devices that you would like to add to the network, refer to their manuals.

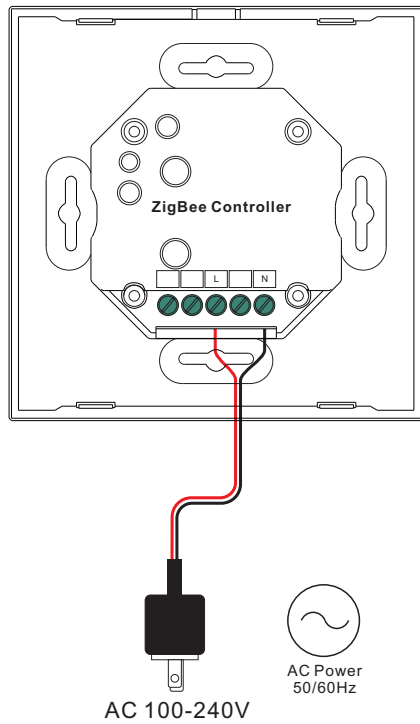
**Step 7:** Touchlink to pair the added remotes and lighting devices you would like to add, the devices will be added to the network through Touchlink, refer to their manuals.

### 13. OTA

The remote supports firmware updating through OTA, and will acquire new firmware from zigbee controller or hub every 10 minutes automatically.

**14. How to Check Whether the Remote Belongs to a Network or not**

Short press any other buttons except group buttons, indicator blinking means the remote has already been added to a network, no blinking of indicator means the remote does not belong to any network.

**Wiring diagram****Installation**